

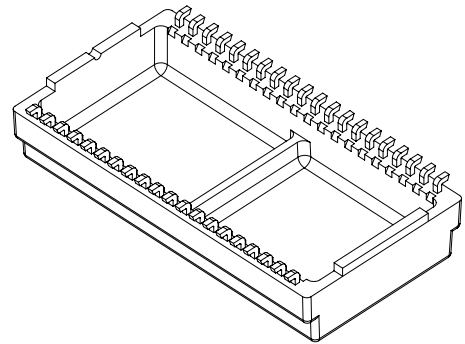
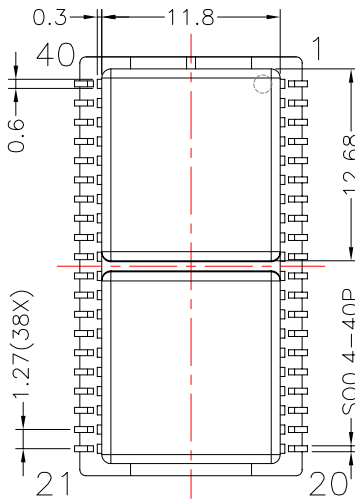
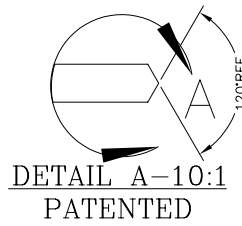
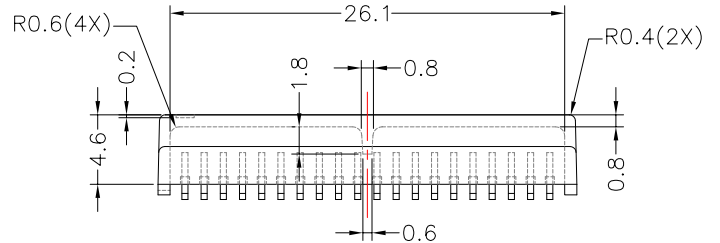
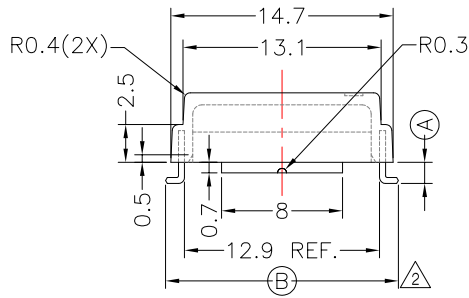
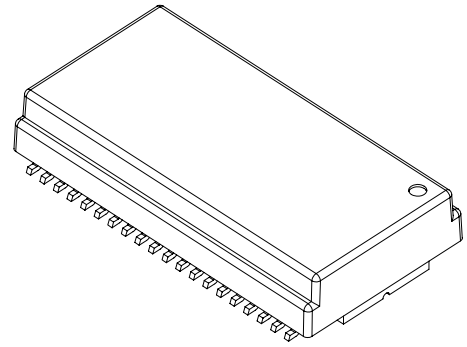
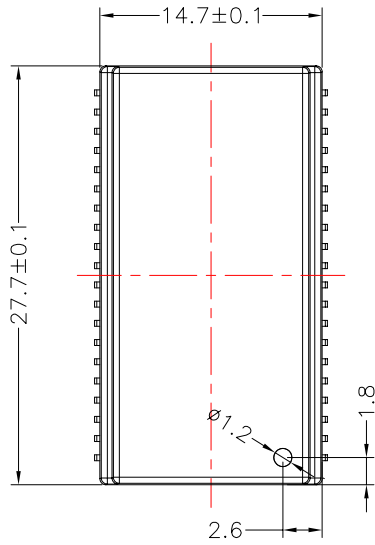


**TRANSFORMER BOBBIN INDUSTRIAL CO.,LTD.**

Tel : 86-769-88789999 Fax : 86-769-88789989  
 http:// tbi-tw.com e-mail : tb6688@ms46.hinet.net

REVISIONS

REV	SYM	DRAFTER	CHECKER	DATE
2		Y.G.HSU	W.H.HSU	02/01/07
3		Y.G.HSU	W.H.HSU	04/02/07
4		YAN.TANG	G.F.YANG	05/21/10



DWG NO. **C0008-40P-L-1.27-B-11** <sup>4</sup>

PART NO.	MATERIAL (BOBBIN)	MATERIAL (TERMINAL)	TERMINAL (PLATING)	PIN ALLOCATION	NOTE
<sup>4</sup> TBI-113-08021.1103	PM-9630JT	PB	Sn	ALL PIN (A)=1.4 (B)=15.4±0.2	
<sup>4</sup> TBI-113-08021.1113	PM-9630JT	PB	Sn	ALL PIN (A)=1.0 (B)=15.1±0.2	

TOLERANCE: .X±0.15 .XX±0.10 .XXX±0.05 UNIT : m / m SCALE 2 : 1

Finish: 1. PB wire Immersion Sn on terminal : Thickness:Sn plating,100,5 μm (200 μ inches) min,Base nickel 0.625 μm (25 μ inches) min.  
 2. CP wire Immersion Sn on terminal : Thickness:Sn plating,100,5 μm (200 μ inches) min.  
 3. Coplanarity deviation: 0.10 mm (0.004 inches) max.

REV 4